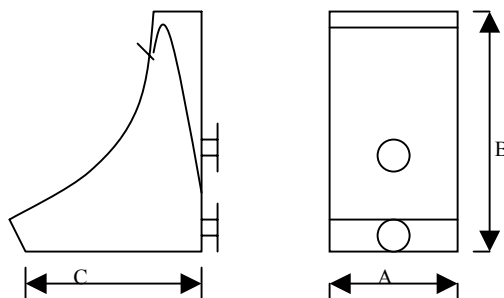


## STATIC SCREENS.

The Proton Static screen is a very effective device screen for the separation of solids from liquids, providing applications in industrial processes and waste water treatment.

The inlet water flows downwards onto the screen distributed by a panel placed on the superior edge. Once the water is distributed across the width of the screen, the lowest water layer will be directed inwards with the help of "The Coanda effect". The solids cannot follow this movement and roll down over the curved screen where they finally fall over the throw-off edge into a hopper.

The screen headbox is offered in different materials such as stainless steel, polyester reinforced fiber glass or carbon steel according to the application. The screen panel is made in stainless steel and is offered with different slot widths such as: 0.25 mm, 0.5 mm, 0.75 mm, 1 mm, 1.5 mm and 2.5 mm.



MODEL	A	B	C
SE-18-72	21"	61"	27"
SE-36-72	39"	61"	27"
SE-48-72	51"	84"	40"
SE-56-72	59"	84"	40"
SE-72-72	75"	84"	40"
SE-120-72	124"	84"	40"

FLOW CAPACITIES BASED ON CLEAN WATER

Slot	0.25 mm	0.5 mm	0.75 mm	1.0 mm	1.5 mm	2.5 mm
Screen mode	0.01 inches	0.02 inches	0.03 inches	0.04 inches	0.02 inches	0.02 inches
SE18-72	3.8 LPS	7.5 LPS	8.5 LPS	9.5 LPS	11 LPS	13 LPS
SE36-72	8LPS	15 LPS	17 LPS	19 LPS	21 LPS	24 LPS
SE48-72	10.5 LPS	25 LPS	29 LPS	33 LPS	35 LPS	40 LPS
SE56-72	12 LPS	36 LPS	41 LPS	46 LPS	50 LPS	58 LPS
SE72-72	16 LPS	50 LPS	57 LPS	64 LPS	70 LPS	82 LPS